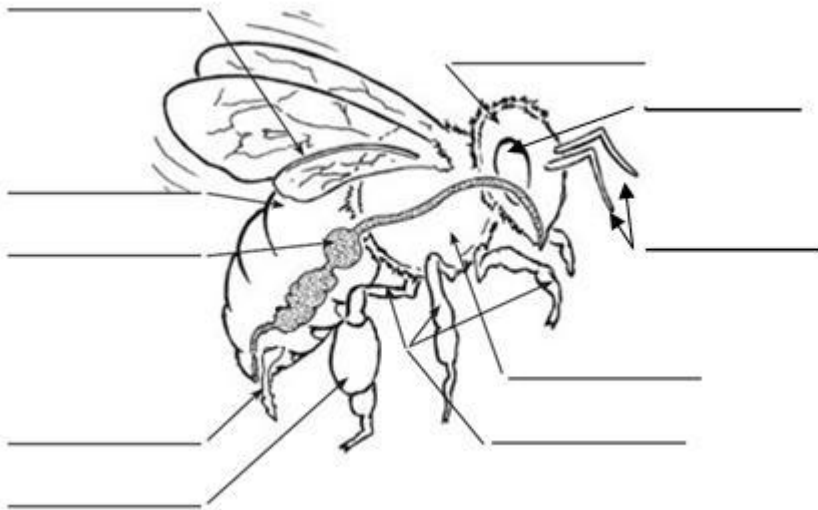


Name: _____ Class: _____ Results: _____

Daltonský pracovný list s metódou CLIL pre 6.ročník

Honey bees

1. The Honey Bee Body



Label the following:

Abdomen
Head
Wings
Honey sac
Antenna
Legs
Thorax
Compound eye
Stinger

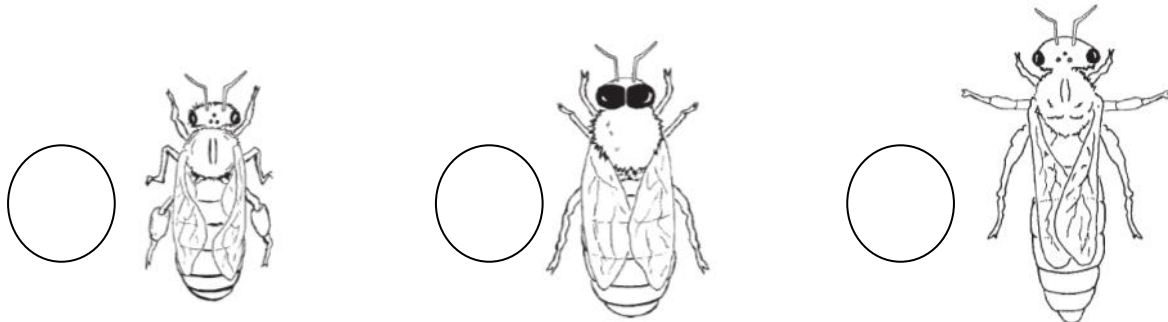
2. Honey bees are social insects and live in groups called colonies. Within each colony are three types or castes of honey bee:

A = Queen bees develop from fertilized eggs in the largest cells in the hive. Larva which will become a queen bee is fed royal jelly for the whole larval stage.

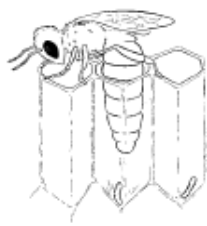
B = Worker bees develop from fertilized eggs. Worker bee larvae are fed royal jelly for only three days. Then they are fed beebread (a mixture of nectar and pollen) for the rest of larval stage.

C = Drones (male bees) develop from unfertilized eggs. These eggs are laid in larger cells. Drones are also fed royal jelly for three days. Then they are fed beebread.

Who am I? A, B or C?



3. According to the pictures describe the development of a bee (from 1-4) and name the particular stages of this development.



4. True or false

A bee's home is known as hive.

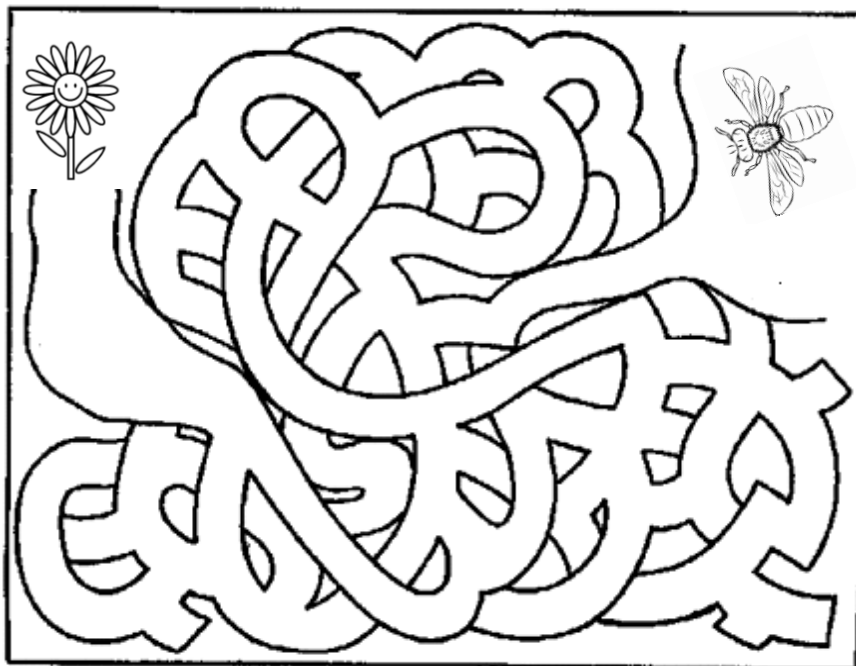
Drones develop from fertilized eggs.

Colony is a group of honey bees living together.

The sweet fluid produced by flowers is known as propolis.



5. Help this bee to find a way to the flower in order to gather nectar.



6. Match the word with the picture.

Match the following words with the corresponding pictures:

- LARVA
- BEE
- EGG
- BEE DANCES
- HONEY
- HIVE
- BEE SWAX
- HONEYCOMB

7. All bees develop in the same four stages. But the development of each type of a bee lasts differently.

BEE	EGG	LARVA	PUPA	ADULT
Queen	Days 1-3	Days 4-9	Days 10-15	Day 16
Worker	Days 1-3	Days 4-9	Days 10-20	Day 21
Drone	Days 1-3	Days 4-9	Days 10-23	Day 24



How long does it take me to grow? _____



How long does it take me to grow? _____

8. Fill in the sentences with the correct word. One word is extra.

EGG LARVA PUPA ADULT

_____ is fed by worker bees.

_____ is a soft, white oval deposited by a queen bee.

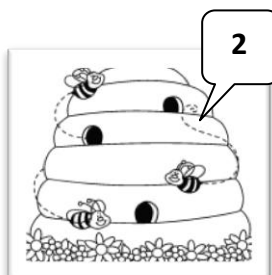
_____ parts are: eyes, legs, and wings grow.



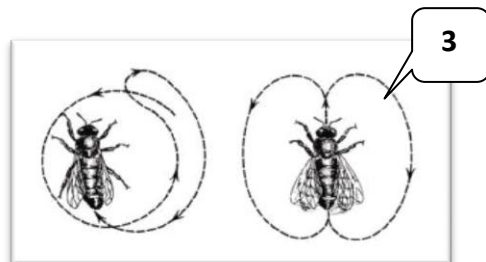
9. Solve the crossword according to the pictures.



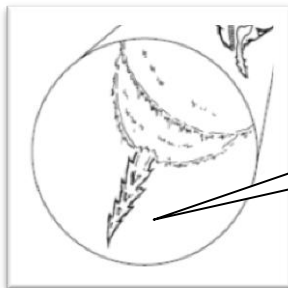
1



2



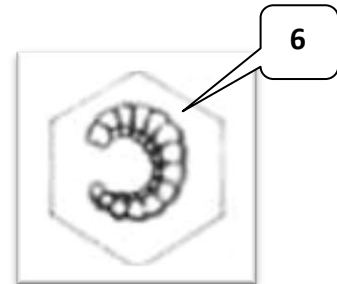
3



4



5



6

	1							
2								
3								
		4						
		5						
6								



Bees fly to flowers to collect _____ there.

10. Match the sentences with the correct number.

Queen bee can live up to

2-5 years

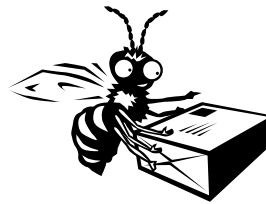
Workewr bee can live up to

2 months

Drone can live up to

1-9 months

11. Find these words.



- Queen Hive
- Drone Legs
- Workers Head
- Stinger Honey
- Antenna



12. Do you know any famous bee characters?

How did you feel about your work today:



ZDROJE:

Zdroje: <http://www.honey.com/images/uploads/general/HoneyFilesWeb.pdf>

Labyrint: http://nd05.jxs.cz/364/901/209f33e974_80841395_u.gif?1319444277

Včela: http://nd05.jxs.cz/264/124/b2d728ba05_87043156_u.gif?1342276798

Kvet: http://www.veselarazitka.cz/fotky15797/fotos/_vyr_1070kvetina3.gif

Úl: http://berusci-net.doyle.netservis.cz/files/images/vcel_14.jpg ,
http://www.qacps.k12.md.us/ces/clipart/Carson%20Dellosa%20Clipart/Carson%20Dellosa%20Seasons,%20Holidays,%20and%20Celebrations/Images/Black%20and%20White%20Images/Summer%20Clip%20Art/BEEHIVE2_BW.bmp

Osemsmerovka: http://www.teach-nology.com/web_tools/word_search/

Med: <http://www.protebe.org/wp-content/uploads/med.jpg>

Kukla: <http://soubory.vfu.cz/fvhe/choroby-vcel/Obr7.jpg>

Tanec: <http://langstroth.wz.cz/images/beekeeper/beedance.gif>

Plásty: <http://us.123rf.com/400wm/400/400/mirage3/mirage31210/mirage3121000019/15627502-graphic-seamless-pattern-made-of-black-honeycomb-pattern-over-white.jpg>

Vosk: <http://www.springvalleyhoneyfarms.com/beeswax.jpg>

Vývoj: <http://www.fcely.cz/obrazky/vynin.JPG>

Tanec: <http://needled.files.wordpress.com/2009/07/waggle-dance.jpg>

Sviečky: http://scrimpybride.files.wordpress.com/2010/12/beeswax_01.jpg

Maja: http://www.martinus.sk/data/tovar/custom/37226_obr2.jpg

Smajlíci: <http://www.tiskatka.cz/3-3-large/sada-smajliku.jpg>